



# CONSTRUCTION AND ROAD SAFETY

*We deliver quality*

[www.sonto.pl](http://www.sonto.pl)

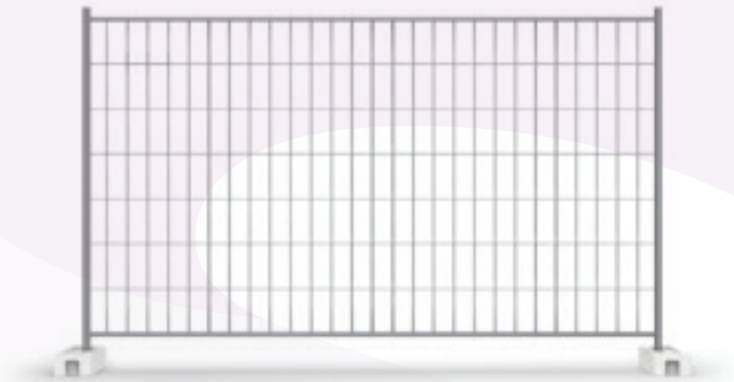
CATALOG  
PRODUCT  
**2025**

1. Temporary construction fences
2. Portable barriers
3. Road barricades
4. Road/sidewalk barriers
5. Sidewalk/parking posts
6. Industrial bumpers
7. Barbed and Concertina wire
8. Temporary stairs and footbridges
9. Road traffic safety elements
10. Industrial fences
11. Gabions and retaining walls
12. Welded mesh panels (weldmesh)
13. Modular stairs
14. Building edge protection (EPS)

# 1. TEMPORARY CONSTRUCTION FENCES

## Temporary mesh construction fences

Temporary standard construction fences with mesh infill secure the protected area from theft and vandalism, prevent unauthorized persons from approaching places where they could be exposed to danger, and are also used during mass events to ensure access control for participants. The offered temporary construction fence systems are exceptionally durable and long-lasting.

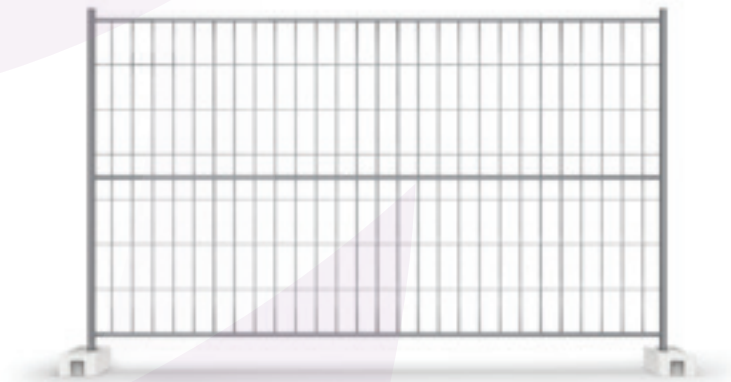


### Standard Fence

Standard mesh panel of a temporary construction fence, 2 m high and 3.5 m long.

### Standard fence with horizontal pipe

Mesh panel of a temporary construction fence with a horizontal pipe as an additional reinforcement.



## Temporary mesh construction fences



### Oval Fence

Oval portable panels are made of only two steel tubes. The openwork span with rounded upper corners is additionally reinforced at the lower corners with plates that stiffen the entire structure.

### Oval Fence with horizontal pipe

Oval panel of a temporary construction fence with a horizontal pipe as an additional reinforcement.



### Low Fence

Low mesh panel of a temporary construction fence with a height of 1.2 m.

## Solid temporary construction fences

### Solid construction fence – galvanized trapezoidal sheet

Solid (opaque) fence panels are very durable. They were designed to restrict access and to minimize the burdensome effects of construction work, protecting the secured area from theft and vandalism and preventing unauthorized people from approaching places where they could be at risk.



RAL 5010  
(blue)



RAL 7035  
(gray)



Galvanized steel



## Accessories

### Concrete/PVC bases, clamps, wheels and gate hinges.

To complete a temporary construction fence, appropriate accessories should be selected: bases, clamps, supports and other necessary elements that a construction site fence should have.



Hinge for gate/door



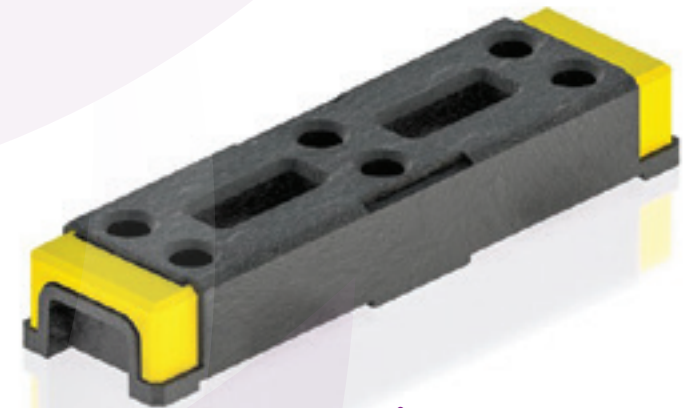
Concrete base



Clamp



Gate wheel



Plastic base

## 2. PORTABLE BARRIERS

### Temporary portable barriers

The task of portable barriers is to delineate temporary traffic routes while at the same time securing areas that are excluded from use due to various types of hazards.



**CITY portable barrier**



**LIGHT portable barrier**

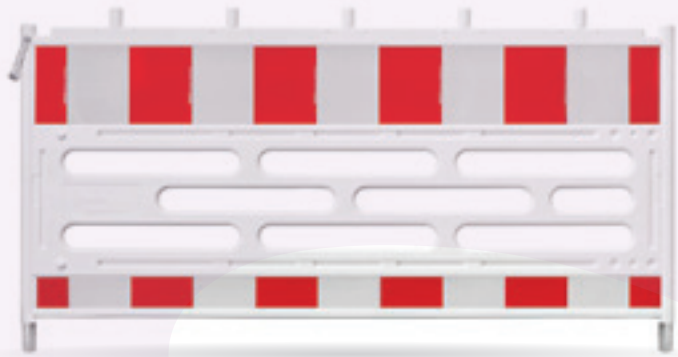


**SUPER LIGHT portable barrier**

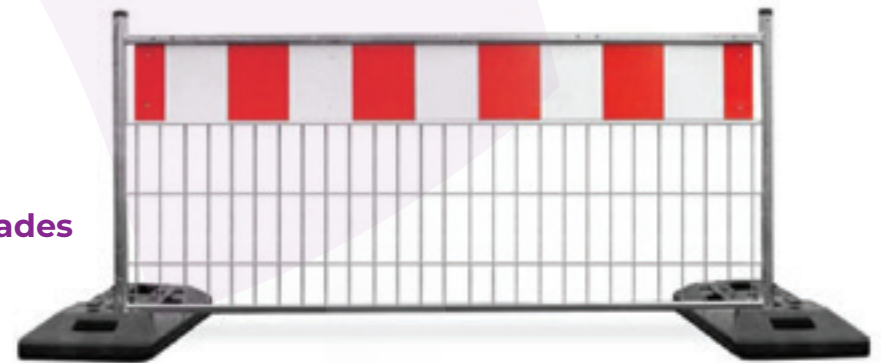
## 3. ROAD BARRICADES

### Rules for using road barricades

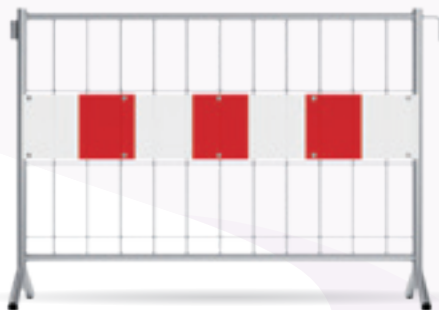
Road barricades are used for the temporary (or permanent) cordoning off and securing of critical areas, e.g. during various construction and repair works or in emergency road safety works.



PVC road barricades



Mesh road barricades



Rectangular barrier

## PVC barricades



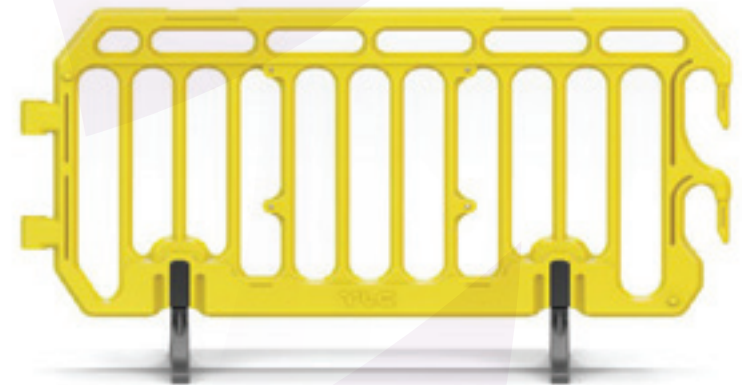
PVC barrier GATE



PVC barrier EURO VISION



PVC barrier THOR



PVC barrier BOSS

## 4. ROAD/SIDEWALK BARRIERS



U-12a barrier



U-12a barrier  
with crossbar



U-12a barrier  
with 2 crossbars



Chain barrier



Rung barrier



Olsztyn barrier

## Road / Sidewalk barriers

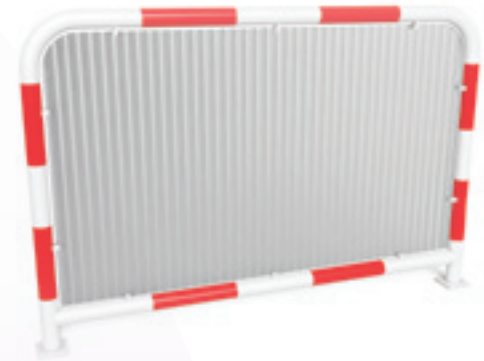
We can manufacture any road barriers to custom specifications according to the client's design.



Lublin barrier



Rung barrier with 2 crossbars



Mudguard barrier

## 5. SIDEWALK/PARKING POSTS

We can manufacture any posts to custom specifications according to the client's design.



Pipe-type sidewalk/parking post



Pipe-type sidewalk/parking post with base plate for bolting down



U-12c road and blocking post



U-12c road/blocking post with base plate for bolting down

## 6. INDUSTRIAL BUMPERS

We can manufacture any bumpers to custom specifications according to the client's design.



Bumper type U2



Equal-arm corner bumper



Bumper type U3



Bumper type U4



Linear bumper – warehouse type



Post bumper

## 7. BARBED WIRE OBSTACLES AND CONCERTINA WIRE



Concertina  
wire



Razor  
wire  
mesh



Flat  
wire  
barrier



Razor  
blade  
wire

## Barbed wire obstacles and Concertina wire



Assembly clips/clamps



Protective gloves, protective sleeves

## 8. TEMPORARY STAIRS AND FOOTBRIDGES



Crossing  
platforms



Temporary  
footbridges



Crossing  
platforms

## 9. ROAD TRAFFIC SAFETY ELEMENTS



Traffic cones



U-25 road separators



Traffic mirrors



Warning lamps



Road signs



Road trailers



Warning tapes

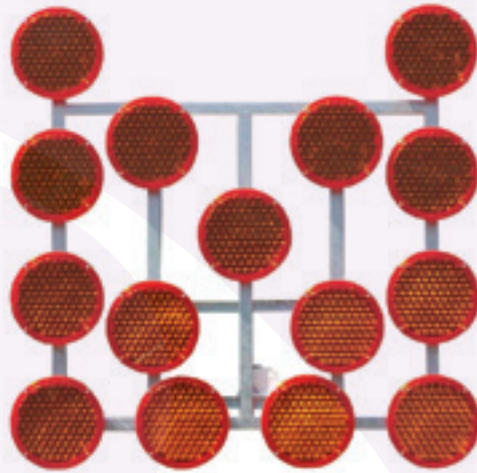


Temporary traffic lights

## Road traffic safety elements



Early warning lamps, flashers



Light arrows



Parking separators

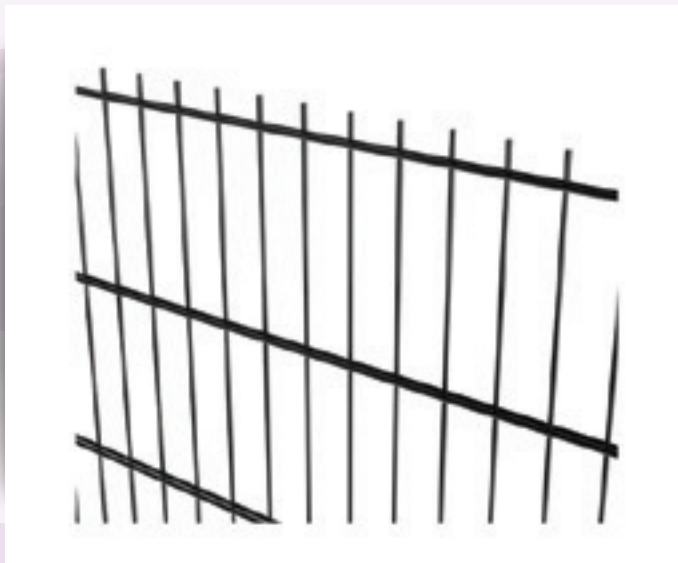


Bases for road signs



Guiding boards U-3

## 10. INDUSTRIAL FENCES



Nylofor 2D fence



Nylofor 3D fence



Sliding gates

## 11. GABIONS AND RETAINING WALLS

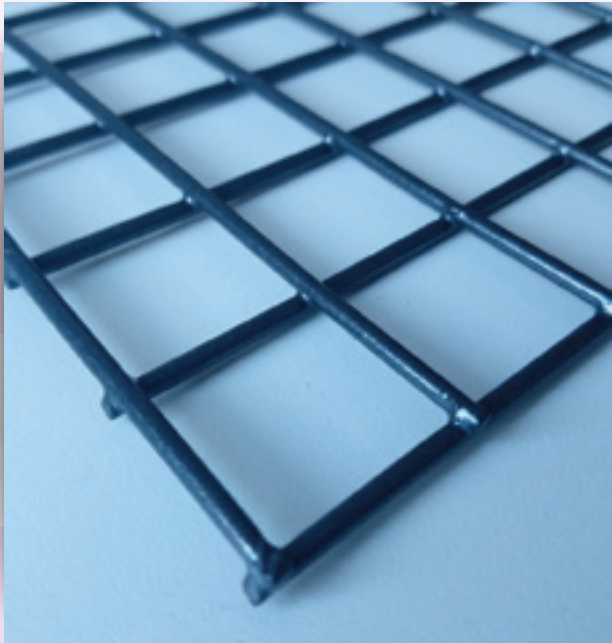


Welded gabions

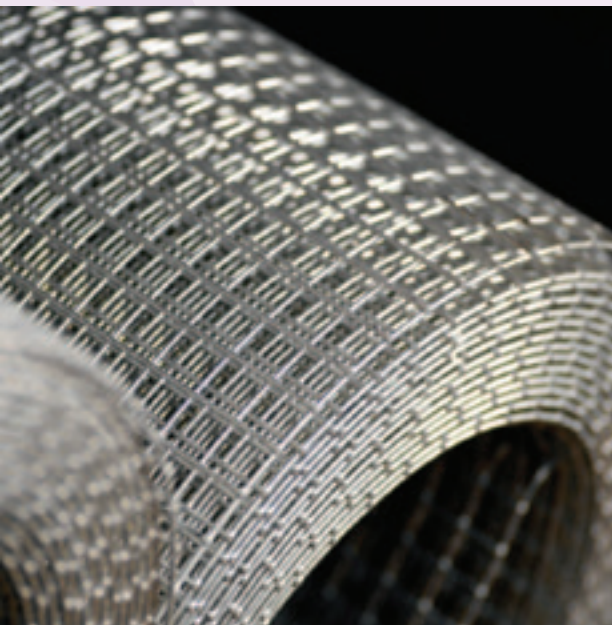
Retaining walls



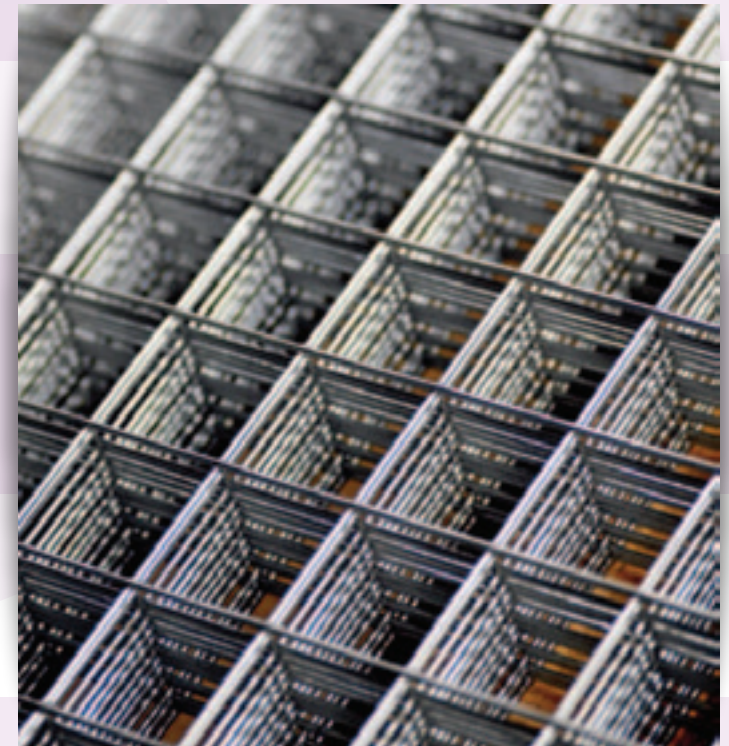
## 12. WELDED MESH PANELS (WELDMESH)



Welded Weldmesh panels with edge wire

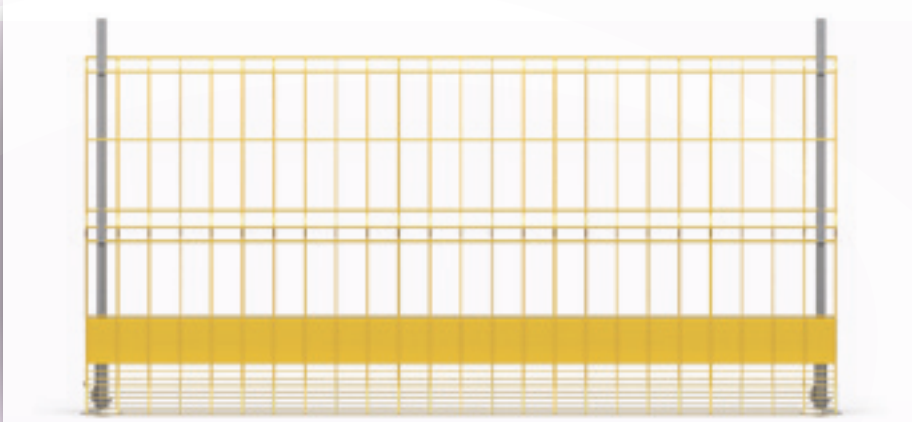


Welded Weldmesh panels with edge wire, galvanized



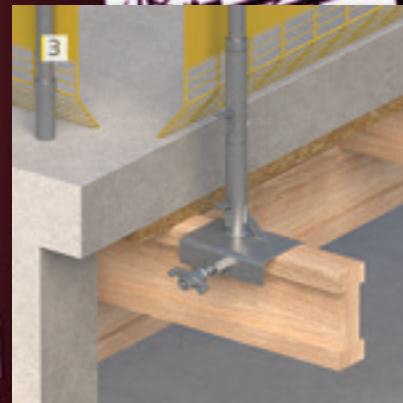
Welded Weldmesh panels without edge wire

## 13. BUILDING EDGE PROTECTION (EPS)



Mesh panel

The building edge protection system (EPS – Edge Protection System) encompasses a whole range of solutions that ensure safety on construction sites, buildings, and in excavations.





[www.sonto.pl](http://www.sonto.pl)

We invite you to contact our consultant at phone number: **+48 509 810 910** or by email at **biuro@sonto.pl**

**SONTO Sp. z o.o.**

**NIP:** 99552564863  
**REGON:** 522300880

**Sales office:**  
ul. Bagienna 36c, 70-772 Szczecin

+48 509 810 910  
[biuro@sonto.pl](mailto:biuro@sonto.pl)